

# Heart of Eden The News Magazine of the Benefice



November 2023



St. Lawrence, Appleby and St. John, Murton-cum-Hilton; St. James, Ormside; St. Peter, Great Asby; St. Cuthbert, Dufton; St. Margaret & St. James, Long Marton; St. Cuthbert, Milburn; St. Columba, Warcop & St. Theobald, Musgrave; St. James, Temple Sowerby; St. Michael, Kirkby Thore & St. Edmund Newbiggin.

Also with additional information from Methodist Churches at The Sands, Appleby, Great Asby, Warcop and Dufton with Knock & The Roman Catholic Church of Our Lady of Appleby **But** ...we also bring information from the council, local voluntary organisations, clubs and associations, buses and trains, events at the villages of the Mid-Eden Valley, and we are partly supported by the firms whose advertisements follow the news items.



A summer garden near Appleby - roll on next May!

# What's on this month in the Heart of Eden?



What's on?? What's on?? What's on?? What's on?? What's on?? What's on?? What's on??

What's on?? What's on?? What's on?? What's on?? What's on?? What's on?? What's on??

What's on?? What's on?? What's on?? What's on?? What's on?? What's on?? What's on??

Date	Time	Place	Event
1 <sup>st</sup>	7:30pm	The Hollies, Asby	Asby Fellowship -John Bevan
1 <sup>st</sup>	7:30	Warcop Parish Hall	Warcop & Sandford WI
2 <sup>nd</sup>	11:30 – 1 pm	Warcop Parish Hall	Soup and Pud
3 <sup>rd</sup>	7:30	Dufton Village Hall	Eden Valley Touring Network
4 <sup>th</sup>	10:30 – 12	Milburn Village Hall	Village coffee morning
5 <sup>th</sup>		Maulds Meaburn Village Institute	Bonfire Night supper
6 <sup>th</sup>	10 – 12	Guide Hut	Cancer Support drop-in
6 <sup>th</sup>	10:30 – noon	Maulds Meaburn Village Institute	Coffee Morning
6 <sup>th</sup>	7:30pm	Ormside Village Hall	Country Dancing
7 <sup>th</sup>	10 – 12	Temple Sowerby Victory Hall	Coffee Morning
8 <sup>th</sup>	10:30 – 12	Sands Methodist Church Hall	Memory Club
8 <sup>th</sup>	7:30pm	Dufton Village Hall	Open Circle
8 <sup>th</sup>	10:30 – 12	Ormside Village Hall	Coffee Morning
9 <sup>th</sup>	7:30	Public Hall Supper Room	Archaeological Group – “Asby Common Excavations”
9 <sup>th</sup>	12 noon	The 3 Greyhounds, Asby	Asby Diners' Club
10 <sup>th</sup>	7:30pm	Dufton Village Hall	Christmas Bingo
11 <sup>th</sup>	7:30pm	Public Hall	Highlights: Driftwood – Pentabus and Thickskin
11 <sup>th</sup>	10:30 – noon	Colby Village Hall	Coffee Morning
11 <sup>th</sup>	10am – noon	Long Marton Village Hall	Coffee, caht, books & bacon butties
11 <sup>th</sup>	10:30 – 3:30	Maulds Meaburn Village Institute	Craft Fair
11 <sup>th</sup>	10am	Warcop Parish Hall	Coffee Morning
13 <sup>th</sup>	2 – 4pm	Public Hall Supper Room	Evergreens
13 <sup>th</sup>	7:30pm	Ormside Village Hall	Craft Evening
14 <sup>th</sup>	11am & noon	Appleby Hub	Edenside – Next Steps Q&A
15 <sup>th</sup>	7:30pm	The Hollies, Asby	Asby Fellowship – Donald Marston
15 <sup>th</sup>	7:30	Long Marton Village Hall	Local History – Carlisle in WW1
16 <sup>th</sup>	7:30	Warcop Parish Hall	Remote Cinema – “The Fabelmans”
17 <sup>th</sup>	7pm -	Maulds Meaburn Village Institute	Gather Inn bar
18 <sup>th</sup>	10:30 – 12	Milburn Village Hall	Church coffee morning
18 <sup>th</sup>	7:30pm	Ormside Village Hall	Quiz Night
18 <sup>th</sup>	7pm	Public Hall Supper Room	St. Lawrence's Church Audio Visual Evening
19 <sup>th</sup>	1:30pm		
20 <sup>th</sup>	10 – 12	Guide Hut	Cancer Support drop-in
20 <sup>th</sup>	7:30pm	Ormside Village Hall	Country Dancing
21 <sup>st</sup>	10 – 12	Temple Sowerby Victory Hall	Coffee Morning
22 <sup>nd</sup> →	As church	St. Lawrence's Church	Star gazing
22 <sup>nd</sup>			Memory Club outing!!
22 <sup>nd</sup>	10:30 – 12	Ormside Village Hall	Coffee Morning
24 <sup>th</sup>	7:30	Colby Village Hall	Dominoes Evening
24 <sup>th</sup>	7:30	Warcop Parish Hall	Christmas Fair
25 <sup>th</sup>	7pm	Appleby Public Hall	Lights, Camera, Appleby – Cumbrian Red
25 <sup>th</sup>	7pm	Maulds Meaburn Village Institute	Alan Cleaver talking about Corpse roads etc.
26 <sup>th</sup>		Long Marton Village Hall	Christmas Market
27 <sup>th</sup>	2 – 4pm	Public Hall Supper Room	Evergreens
29 <sup>th</sup>	7:30pm	The Hollies, Asby	Asby Fellowship – Jane Morris
2 <sup>nd</sup> Dec.	7pm	Appleby Public Hall	Lights, Camera, Appleby – Polar Express??

What's on?? What's on?? What's on?? What's on?? What's on?? What's on?? What's on??

### Father John Winstanley introduces himself

I am Fr. John Winstanley, parish priest of St. Catherine's, Drover's Lane, Penrith with St. Wulstan's Alston Moor. Bishop Paul Swarbrick asked me to take on the care of Appleby and Kirkby Stephen Catholic communities about a year ago in addition to Penrith and Alston. I write for the first time for the Heart of Eden Churches Magazine as the Catholic priest serving the Parish of Our Lady of Appleby. We are all very aware, I am sure, that patterns of ministry in all our churches are ever changing. I was pleased to attend earlier in the year the Inductions by the Bishop of Penrith of Anglican clergy in Kirkby Stephen Parish Church and in St. Lawrence's Appleby. The large area I serve, along with Deacon Charlie and Deacon David, embraces four *Churches Together* fraternities: Appleby, Kirkby Stephen, Alston Moor and Penrith. Each local Catholic congregation, thankfully, have their own representatives who can attend meetings and events, and I join with them when possible.

Only the Holy Spirit can be in all places at all times, so I resign myself to doing what is possible with His guidance, but accepting the many things I cannot do. I am sure that such is the same for all of us.

*As I write these few lines today, the Roman Catholic Church celebrates the Feast Day of Pope St. John XXIII, who was Pope from 1958 until 1963. His advice was: 'See everything, overlook a great deal, improve a little'. These realistic sentiments can help us to focus on our helplessness before God, and therefore our trust in Him. Left to ourselves, we can be quite useless. Relying more and more upon God and His loving grace, He can do great things through us!*

In the darkness of November, may our prayers for one another, and our example of Christian living, help us to see God's constant light made known to us in Christ Jesus.

My prayers and every good wish,

Fr. John Winstanley

### Church Registers August - October 2023

#### Marriage - We congratulate

16 <sup>th</sup> September	Joseph (Joe) Lambert & Rebecca (Becca) White	St. Peter's Asby
30 <sup>th</sup> September	Chris Pigney & Emma Proctor	Musgrave

#### Funerals...May they rest in peace and rise in glory

26 <sup>th</sup> August	Patricia Sewell	Temple Sowerby
29 <sup>th</sup> August	Violet Dowson	Appleby
11 <sup>th</sup> September	Elizabeth Higginbottom	Kirkby Thore
15 <sup>th</sup> September	Dorothy Armitage	Murton
10 <sup>th</sup> October	Doreen Donnelly	Long Marton
13 <sup>th</sup> October	Betty Richardson	Appleby

### Church of England:

Rector: Rev. Fran Parkinson (☎07547791315) & Rev. Andrew Burrell (☎07778683820)

Retired Priest: Rev. Roger Collinson ☎ 017683.52886

For (C of E) baptism or wedding bookings contact Joyce Keetley, Office Manager, email: [applebymc@carlisle-diocese.org.uk](mailto:applebymc@carlisle-diocese.org.uk)

**Methodist Minister:** Rev. Andrew Sterling: ☎ 017683 51244

**Roman Catholic Priest** (Our Lady of Appleby) Fr. J. Winstanley ☎ 01768 862273



Electronic copy by email is preferred; email address [heart-of-eden-editor@hotmail.co.uk](mailto:heart-of-eden-editor@hotmail.co.uk) - often we are quite busy and don't have time to reply. Please identify the content in the email subject line and in the name of each attachment. Please include some identification (e.g. shoe shop, W.I.) in the subject, and not just "Heart of Eden" - everyone does that! New or changed copy for already-arranged adverts should be sent to the editor as above. It would help if you could please send any payments for advertising in envelopes clearly marked 'Advertising Manager'. Prices on application for commercial advertisements. Note to Advertisers — only adverts which have been paid for in advance will be printed in this newsletter. We are very grateful for the very generous donations made by various groups and individuals towards the running costs of this Newsletter. We welcome articles (and front cover photographs) for this magazine — relevant to the time of year, book reviews, travel articles, etc. Please send them to the editor. 'Small Ads' Section: we will only accept adverts suitable for a Church Magazine, and adverts will cost £5 for up to 40 words. Please write your advert (in block capitals) on a piece of paper, with your address, and leave it in the Heart of Eden tray near the main church door of St. Lawrence's. Put an envelope, with a £5 note in it, and marked 'HoE Small Ad' and something to identify the advertisement, in the safe. The safe is straight ahead of you as you enter the church. To be included in a particular edition of the newsletter, please do this before noon on the 14<sup>th</sup> as with other items" **If you do this, please ring the editor on ☎ 017683.51043 so that he knows to collect!! n.b. (1) please make cheques payable to 'The Heart of Eden Expenses Account' (2) let the editor know! Newsletter Delivery** As on-line delivery of this newsletter is strictly by the editor's list of email addresses, and as a link from "A Church Near You"

### St. Lawrence, Appleby with St. John, Murton cum Hilton



Churchwarden and Secretary: Jo Ayres (☎52017)

### Appleby Church Bell Ringers - Free Bellringing Lessons

We are actively recruiting and will be pleased to welcome recent school leavers, parents of growing families, recently retired people or others who want to explore a new interest that is a bit out of the ordinary.

To book your free bellringing lesson and learn the art of change ringing on church bells, contact [nickharrop@btinternet.com](mailto:nickharrop@btinternet.com)

### St. Peter, Asby



Churchwarden: vacant

PCC lay chair: Peter Miller ☎51707

Secretary: Karen Royle ☎ 07966.371044

### St. Cuthbert, Dufton



Churchwardens:  
Mrs. Gillian Bryan ☎ 51414  
Mrs. Pam Day

Secretary: Mrs. Louise Stewart

### St. Michael, Kirkby Thore



Churchwarden:

Margaret Davidson ☎ 017683.61699

Church Warden and Secretary:

Maeve Moore ☎ 017683.62005

### SS. Margaret & James, Long Marton

Churchwarden:

Mr. Lutfat Greenshaw ☎07802254982

Services are suspended pending re-establishment of a PCC



### St. Cuthbert, Milburn



Churchwarden:

Mr. Leigh Harding ☎ 0333.014.3944

Secretary: Christine Braithwaite

### St. Theobald, Musgrave & St. Columba, Warcop



Secretary: David Opperman [david@davidopperman.co.uk](mailto:david@davidopperman.co.uk)

### St. Edmund, Newbiggin



Churchwardens:

Mrs. M P. Sawrey-Cookson ☎ 61574

Tim Whittaker

### St. James the Less, Ormside



Churchwarden: Margaret Parry

Secretary: Richard Parry

both ☎017683.51043

### St. James, Temple Sowerby



Churchwardens:

Angela Cleasby ☎017683.61534

Robin Witchell ☎017683.61193

Secretary:

Anne Farmer ☎017683.61770

## Our Sister Churches

### Sands Methodist Church



Rev. Andrew Sterling ☎51244

General Enquiries Alastair Kirkpatrick on [am.kirkpatrick@yahoo.com](mailto:am.kirkpatrick@yahoo.com) or ☎51184

### Roman Catholic Church of Our Lady of Appleby,



Gartheads Road, Appleby

Fr. John Winstanley ☎ 01768 862273

**St Anne's Hospital** (aka Lady Anne's Almshouses) Every Tuesday morning throughout the year (except August) there is a short morning service (matins) at 9.15am in the lovely little Chapel in the courtyard where all visitors are very welcome to join us. Holy Communion is on the first Tuesday of the month.



## Tours of St Anne's Hospital

For a donation to our Garden Fund, groups or individuals can have a look round a cottage, a talk in the courtyard and Chapel and a tour of our gardens.

To book, contact Valerie Kendall  
Tel: 017683 53159; email:

[vkendall@live.co.uk](mailto:vkendall@live.co.uk) or 7 St Anne's Hospital, Boroughgate, Appleby-in-Westmorland, CA16 6XQ



## News from the Area

### Age Concern

Age Concern Appleby is a local charity based in Boroughgate and Low Wiend and run entirely by volunteers. Our funds are distributed annually to local groups in the CA16 postcode who provide a service or activity to older people.

We are keen to hear from existing or new groups which may have been started and which may benefit from a donation from the charity.

Please contact Elaine Barraclough, Secretary on ☎017683 51250 or email [ageconcernappleby@gmail.com](mailto:ageconcernappleby@gmail.com) in the first instance. All requests are considered at our November meeting

## Cancer Information and Support in Eden

"Come for Coffee" drop-in sessions take place in the Guide Hut on the 1<sup>st</sup> and 3<sup>rd</sup> Mondays of each month (this month 6<sup>th</sup> and 20<sup>th</sup>) from 10am to noon (excluding bank holidays). Anyone affected by cancer is welcome (whether patients, relations or carers of any age). If you require any further information regarding the meetings please telephone Rosie on ☎017683 52263 or Jackie on ☎017683 52277.



In this time of great uncertainty, and with the cost-of-living soaring, the Food Bank is working hard to support those in our communities who are struggling. It is only with the support and help of people such as yourselves that we are able to provide this assistance. We are so grateful.

If you would like a 'personalised' poster from UEFB to display, please reply to the email below with the full name to be included:

[UEFBSecretary@outlook.com](mailto:UEFBSecretary@outlook.com)

Donations can be made at Appleby and Kirkby Stephen Co-Ops, and K.S. Spar shops during opening hours, also at the wheelie bins outside Sands Methodist Church on Appleby Sands from 11 to 11:30 on Tuesdays and 10 to 10:30 on Fridays

Additionally, should you know of any person or family in need of the food bank, please do get in touch, contact details below:

☎: 07596 690 902

f : upperedenfoodbank

Web: [www.upperedenfoodbank.org.uk](http://www.upperedenfoodbank.org.uk)

These may also be helpful:

Citizens Advice Carlisle & Eden:

03300 563 037, or Facebook

Local Links, Kirkby Stephen: Mon & Wed, 10 - 12, 1-3pm

017683 71775,

Cumbria County Council Community Support:

01228 221100

## The Welcome Inn!

It has been so lovely to meet and pray with those of you who have dropped into our 'Welcome Inn' since its launch in November.

We are open every Tuesday afternoon, from 1pm to 3pm, in St Lawrence's Church, Appleby as a place of companionship and healing with an opportunity for prayer and connection.

We also have a private and confidential space available in our Lady Chapel if you would like to talk or pray with one of our team. Once a month – on the first Tuesday at 2.30pm - we will also be holding a special 'service for healing' which is an opportunity to receive prayer and anointing, for you or for someone you love.

All are very welcome! We look forward to seeing you.

As a church we believe that healing is not just about people being well; it is about human flourishing and that, whatever the state of our body, mind and spirit, all people are beloved of God.



For further information, or for prayer requests, you can email us on [welcomennhhh@gmail.com](mailto:welcomennhhh@gmail.com)

## Citizens Advice Carlisle and Eden Volunteers needed

Citizens Advice Carlisle and Eden (CACE) is here to help local people with any problems they may be experiencing. In the last year CACE has provided free, confidential, independent advice and support on matters including employment, debt, benefits, housing, energy and consumer affairs to around 5,000 people.



Locally, we rely on a team of committed volunteers in a number of roles. To support our work we now want to recruit:

Digital Advisors: to work with clients by email and on the phone to provide advice across a wide range of issues.

Energy Advisers: to work with clients on the phone to give information and advice on dealing with problems people are having with their energy suppliers and bills

No special experience is required but volunteers should be good communicators and non-judgemental, be prepared to undertake a rigorous training programme, have good IT skills and able to commit to one day a week of volunteering.

If you are interested full details and how to apply can be found at: <http://www.ca-ce.org.uk/> or email [volunteer-recruitment@ca-ce.org.uk](mailto:volunteer-recruitment@ca-ce.org.uk) with a daytime phone number so we can call you for a chat

## Inner Wheel

We have two manual wheelchairs for temporary use by local people. They are kept at my house, 15 Boroughgate, and can be borrowed for a nominal deposit of £10. If the borrower cares to make a donation to Inner Wheel Charities after the loan, that would, of course, be welcomed.

Contact Gillian Whiting, Appleby Inner Wheel on phone 017683 53324.

## Appleby Smarter.

We would very much welcome some new members!

On Mondays 1pm - approx. 3pm (providing the weather is looking ok) expect to see us around and about town in our Hi Vis jackets, tidying / gardening / painting (and chatting!) or whatever task is on our long list.

Small social events a couple of times a year are held for our members and sometimes a cuppa and more chat happens at the end of a session, in one of our town's excellent cafes.

If you might be interested in joining this happy group of volunteers or would like to know a bit more, please contact Mike Eden by email [applebysmarter@gmail.com](mailto:applebysmarter@gmail.com) or ring 0775 192 4982.

Also, anyone is more than welcome to pop down to wherever we are on a Monday afternoon for a chat and to see what we're up to. Again, contact Mike for details of where we'll be. Please Like our Appleby Smarter Facebook Page to see what we've been up to and comment if you wish

## Tourist Information Centre

We have a lot of visitors who would like to join in with local events, so if you send the TIC a poster we will advertise your event on Facebook and put it out on our A-board.

We are trying to update the local clubs' and associations' contact numbers, in and around Appleby. If you are the

contact, could you please get in touch with Appleby TIC [tic@applebytown.org.uk](mailto:tic@applebytown.org.uk).

We also can book a coffee morning on Saturdays at The Supper Rooms, Market Hall, Appleby. This is a wonderful way of promoting your cause.

We have lots of local books, and locally made craft items by Eden artisans. Come in and browse!

Opening Hours are currently Monday - Saturday 10am till 3pm.

Website: [www.visitappleby.co.uk](http://www.visitappleby.co.uk)

Facebook: Appleby Tourist Information Centre

Twitter: @applebytown

## Appleby Library

Opening hours now:

Monday, Wednesday and Friday, 9am to 12:30, 1:30 to 5pm  
and Saturdays 10am to 1pm

## Penrith and District Red Squirrel Group

Your native red squirrels need you!  
Become a member of Penrith and District Red Squirrel Group for £20 a year. If you see a grey or sickly red please ring Gary Murphy on ☎07974788434

Visit our website at [www.penrithredsquirrels.org.uk](http://www.penrithredsquirrels.org.uk) to donate. If you would like a talk for your club/group we can arrange them. Coffee mornings and other fundraising events would also help. Find us on Facebook.



## Public Hall Coffee Mornings

Appleby Public Hall Supper Room  
Saturdays - 9:30am to 11:30am. If you are able, visit [applebytown.org/public-hall-calendar/](http://applebytown.org/public-hall-calendar/)



<b>Date</b>	<b>in aid of</b>
25 <sup>th</sup>	Inner Wheel

If you would like to hold a coffee morning for your charity or organisation; please get in touch with Alison Taylor at Appleby TIC Tel 017683 51177 Ext 2 and we will put you on a waiting list.

18 <sup>th</sup>	Northern Crafts all day
------------------	-------------------------



Publication deadline meant that this report was written before the Full Council meeting.

## Waste Bins

Domestic waste in blue bags and the contents of public waste bins are removed by Urbaser under a contract negotiated by Eden District Council and passed on to Westmorland & Furness Council. Currently Urbaser operatives who are members of the GMB union are in dispute with the company and have taken strike action. This has affected the timing of blue bag collection and also delayed the emptying of street bins, whose overflow has had to be put in additional bags pending removal. The collection of waste for recycling in green bags, boxes and wheeled bins is done by a different contractor and is unaffected.

## Town Charities

The Town Council provides trustees for two long-standing charitable bequests to the town, the Hannah Kennington and Ingram Dawson charities. Both were former residents who left money in their wills to be used for the benefit of the communal life and appearance of the town. Applications from community organisations are welcomed. Details can be found on-line and may also be obtained from the Town Clerk at the Moot Hall.

## Road Closures

Drawbridges Lane between Cross Croft and Garbridge Lane was closed for a week for resurfacing, but re-opened on 16 October. High Wiend is currently closed to facilitate essential repairs on the former Golden Ball, with traffic diverted via Shaw's Wiend and Doomgate. The contractors are understood to be on schedule. As previously reported, planned works on Chapel Street, entailing temporary closures, are not expected to commence until 2024.

## Butts Footpath

The footpath from the Leisure Centre along the northern perimeter of the cricket field is intended for pedestrians, not for vehicles or mounted cyclists; the grassland between the two paths east of the Leisure Centre is not a parking area. A bollard at the west end of the path that was removed following tree works in the wake of Storm Desmond has now been replaced.

## Drains and Gullies

As usual in autumn, roadside gullies get filled with leaves, with the problem compounded when heavy rains wash in mud. Westmorland & Furness Highways have limited resources for drain cleaning but will respond as soon as they can. Please report blockages online or to the TIC, if you are able.

## Facebook

The Town Council's Facebook page is named Appleby Town Council. Information, views and opinion polls located on other pages, which may bear the names of individual councillors, have not been authorised by the Town Council as a collective body.

## Appleby Edibles

Come and grow with us!

### Who are we?

An inclusive group of gardening and nature enthusiasts who like to grow fruit and veg, socialise, and share skills in pleasant surroundings. Our members are of all ages and abilities, and we are happy to welcome members with health challenges. We enjoy a strong sense of connection with the environment.

### Where are we?

At the far end of the former Appleby Heritage Centre site (near the railway station). There is free parking adjacent to the garden.

### When are we open?

Please come and visit us Tuesdays and Saturdays 10-12. When you join Appleby Edibles you come up and garden whenever you like.



Enquiries to Karen West (Chair) 07974 759136, Annie Weir (Secretary) 07919 542143, or email us at [applebyedibles@hotmail.com](mailto:applebyedibles@hotmail.com)

## Bus Talk

From Friends of Eden Valley Public Transport, using information from Westmorland and Furness Council.



**Bus Fare Cap - it is understood that maximum single fares will continue at £2 until 31 December 2024. All concessionary passes such as NOW Cards are still accepted as usual.**

### **563 Appleby to Penrith service (Monday - Friday) (Stagecoach)**

This service continues to operate with no changes.

### **563 Kirkby Stephen Station to Penrith service (Saturday) (Stagecoach)**

This service started on 1 April, initiated by Kirkby Stephen Town Council with support from Town and Parish Councils along the route and the Friends of the Settle-Carlisle Line. The service has proved very popular; it has been agreed that it will continue operating until April 2024 (and hopefully beyond).

The 563 timetable is available as a leaflet at various community locations and on [www.westmorlandandfurness.gov.uk/buses](http://www.westmorlandandfurness.gov.uk/buses)

### **S6 Sedbergh and/or Kirkby Stephen to Brough to Penrith service (Tuesday and Thursday) (Western Dales Bus)**

NB This service does not pick up passengers from Appleby Sands to Penrith on outward trips to Penrith nor drop off passengers in the same section of the route on return trips but can be accessed from the stop opposite the Royal Oak (Appleby) if there are seats free.

The S6 timetable: see [www.westmorlandandfurness.gov.uk/buses](http://www.westmorlandandfurness.gov.uk/buses)

## Community Transport

(Supported by Westmorland and Furness Council)

**Community Wheels service** This service continues to operate on Fridays into/out of Appleby - to join the Community Wheels scheme, please call 01228 226430.

**Voluntary Social Car Scheme** covering Appleby, Bolton, Temple Sowerby and Milburn - if you would like to use this service, please contact Valerie Kendall Scheme Coordinator on 017683 53159.

## Appleby Clubs, etc.

### **Appleby-in-Westmorland Society**

Next meeting Sunday 19<sup>th</sup> at 1:30 pm in the Public Hall Supper Room

Apples Ancient and Modern by Hilary Wilson

Our September meeting was entitled **"Married in the Moot Hall"**, and the question being asked by the speaker was **"Was it you in the picture?"**

Due to a rearrangement of the published programme, Appleby-in-Westmorland Society Membership Secretary Archie Spence showed a selection of slides from the Appleby Archive to members at their recent meeting.



Within the memories of some of the audience was a time when there were any more shops in the town. 'We were more self-sufficient then' said Archie, harking back to a time before supermarkets beckoned from neighbouring centres like Penrith and people began to own their own cars and even - hard to believe today - public transport was more frequent. At one time the Post Office was in Bridge Street in Appleby as was a branch of JJ Graham. The end of the Moot Hall building which is now the entrance to the Tourist Information Centre was a bike shop, even a penny farthing among the machines displayed. Owners Blakes combined bikes with boot making!

Various shots of the other end of the Moot Hall building showed how it has been reconfigured throughout the years, with steps to the Council Chamber in different formats. 'The changes there are a chronicle of the town through the ages'; someone said.

A view of Boroughgate showed the now mature line of lime trees on either side not long after they were planted in 1875, one for each member of the Town Council it is said. Stephenson's fruit and veg shop is long established on its current site, but what is now Boots (although not allowed to use its trademark logo, being a listed building) was once Gilbertsons the Chemists.

Also shown were old photos of Shiney Row near the river, knocked down to build Edenside Retirement Home, itself now due for demolition and rebuilding as supported living units following its closure after the 2015 floods which affected nearly eighty properties in Appleby. The Grammar School was represented by past headmasters and group photos, it being noted that during World War Two a windmill was built there to generate electricity.

A slide of the Appleby Chair - the town had chairmakers in Bridge Street - brought more recent memories of 'Appleby Times' a set of display boards showing photographs and text and now largely relocated in the Hub from its earlier home in a shop which is now an Italian restaurant. Included was a view of Appleby Creamery, an employer of many local people in its heyday which ended when dairy production was transferred over the Scottish border to Lockerbie.

So, when was the Moot Hall a place to get married/? Prior to the Local Government Act of 1974, Mrs Richardson officiated at the Shire Hall which was the Registry Office. During the many administrative changes which took place at that time, the Shire Hall was not handed over to the newly-formed Cumbria County Council. During an interregnum of six months the Moot Hall served as a wedding venue until the function of the Registry Office was transferred to Penrith.

If you were one of the couples married at Appleby Moot Hall, Archie Spence would like to hear from you. You can contact him on 07977387486 or [archiespence28@gmail.com](mailto:archiespence28@gmail.com)

### **Appleby Archaeological Group**

Thursday 9<sup>th</sup> at 7:30 in the Public Hall Supper Room

Asby Common Excavations - update by Andy Phelps

### **Appleby Bowling Club**

We are always looking for new members to come and play. If you are interested please contact the club secretary Peter Metcalfe 017683.52306 or call in at the bowling club

## Appleby Evergreens

Evergreens in the Public Hall Supper Room from 2 - 4 pm on alternate Mondays (30<sup>th</sup> October, 13<sup>th</sup> & 27<sup>th</sup> November). An afternoon of dominoes and bingo is promised, with tea, biscuits and chat and even small prizes for the winners. The entry fee, which includes a raffle ticket, is £3.00 and all are welcome.

## Appleby Rainbows, Brownies and Guides

Our team at Appleby Friends of Guiding and our leaders make everything run really smoothly. However, we are in need of more volunteers to help with our thriving units. We particularly need volunteers for Rainbows on Thursday 5:00 - 6:15pm and Brownies Wednesday from 5:00 - 6:15pm. We are looking for people who could help either on a weekly basis or regularly on a rota basis. You may be 18-20 and looking for some experience of working with children to help with your future career, or have a daughter at one of the groups and could be involved, we would welcome any younger/older siblings to join you, or a grandparent or trainee grandparent who has time and a wealth of experience to offer. If you feel you are able to support our units or want to come along and find out more, please contact me directly at [kath1nunn@gmail.com](mailto:kath1nunn@gmail.com)

*Kathryn Nunn*

Chair Appleby Friends of Guiding



### Appleby Rainbows, Brownies and Guides



## JOIN US



#### Meeting times:

1st Appleby Rainbows (age 5-7) Thursday 5:00-6:15pm

2nd Appleby Brownies (age 7-10) Wednesday 5:00-6:45pm

1st Appleby Guides (age 10+) Wednesday 6:15-7:45pm

We are always on the look out for adults to become a leader with any of these groups.

Message the group for more information:

[kath1nunn@gmail.com](mailto:kath1nunn@gmail.com)



Appleby Rainbows, Brownies and Guides

## 1<sup>st</sup> Westmorland Scout group (formerly 1<sup>st</sup> Appleby-in-Westmorland)

We're still recruiting Beavers (6-8yrs), Cubs (8-10½ yrs) & Scouts (10-14yrs). We create stronger communities and inspire positive futures, by providing fun, friendship and adventure. Join as a young person or volunteer and help young people gain skills to succeed.

Contact:

☎0345 300 1818, or

<https://edenscouts.org.uk>

[1stwestmorland@edenscouts.org.uk](mailto:1stwestmorland@edenscouts.org.uk)

## Appleby Hub Patchworkers

Hub cafe in Appleby 10-12 on Thursdays - free and everyone is welcome. If anyone has any queries please contact [jane.farkins@right2work.org.uk](mailto:jane.farkins@right2work.org.uk)



## Highlights

Saturday 11<sup>th</sup> November in Appleby Public Hall at 7.30pm

**DRIFTWOOD : Pentabus and Thickskin**



These are the shores of the Vikings, Victorians, van drivers and visions. The tide is out but the chips are hot. Two brothers go for walks along the beach at Seaton Carew. Their dad is dying, and their town is crumbling. Family rifts and political divides try to pull them apart, and a figure made of driftwood stalks the shores at night....

Driftwood is a two man show about tricky bonds and breaking points in one of the poorest regions of the UK.

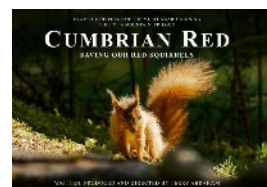
Tickets 017683 52902 / [www.highlightsnorth.co.uk](http://www.highlightsnorth.co.uk)

## Lights...Camera...Appleby!

### Cumbrian Red - Saving Our Red Squirrels (18)

Appleby Public Hall, Saturday 25<sup>th</sup>, 7.00pm

Celebrating the work of one of our local filmmakers, we are delighted to be able to screen Terry Abraham's new film Cumbrian Red - Saving Our Red Squirrels.



Featuring stunning cinematography, this breathtaking, moving and educational film documents the plight of native red squirrels within Cumbria. Some of the film has been shot in the Eden Valley, very close to our home town. The filmmaker Terry Abrahams, is an award-winning documentary maker and the producer of the BBC hit series 'Life of a Mountain'.

Learn more about the life of these beloved and iconic creatures alongside the voices of scientists, rangers, conservationists and locals as they seek to protect and conserve endangered red squirrels. The film is narrated by Eric Robson OBE.

We are delighted that Terry Abrahams will introduce the film and host a Q&A afterwards.

**This is a film only, all ticketed event. Tickets must be purchased in advance and not on the door to avoid disappointment.** Film tickets are £7 and available from Appleby Tourist Information Centre & the Courtyard Gallery, Appleby.

A donation from sales will be given to the Penrith and District Red Squirrel Group.

**Doors open 6:45pm. Film screening at 7pm.** Pay bar, raffle and interval ice-cream from the Jersey Ice Cream Farm, Melkinthorpe. For further information please ☎07921489611

or email : [applebyremotecinema@btconnect.com](mailto:applebyremotecinema@btconnect.com)

Make Remote cinema night your regular monthly social. All profits support further film and cultural events for Appleby. Remote in Appleby is run by volunteers and is a not-for-profit organisation. Remote Cinema is a scheme funded by the Big Lottery and offered to villages in Eden, by Eden Arts and Cine North. Follow us on our Facebook page: *Appleby Remote Cinema Scheme*

## Memory Club in Appleby

Meetings are normally held on the 2<sup>nd</sup> & 4<sup>th</sup> Wednesdays of each month at Sands Methodist Church Hall 10.30am -12 noon. This month's meeting will be on the 8<sup>th</sup> only (at the Sands) as an outing has been arranged for 22<sup>nd</sup> November.

All are welcome, particularly those with memory loss. There will be light refreshments, games, crafts, music and singing. For further information please contact:-

Anne  
Tim

☎017683 51219  
☎017683 52640

## Probus Club

If you enjoy a good meal and interesting conversation, perhaps you might like to consider joining the Appleby Probus club.

The Appleby Club is strictly non-political, non-denominational, gender-neutral, and does not raise funds. It is currently seeking new members!

You might also like to know that the club also runs occasional outings such as trips to the theatre or sporting events. As an example, we recently visited the Carlisle Airport museum.

If you think that any of this might interest you, please drop a line to either Ian Rudd at [ian.rudd70@icloud.com](mailto:ian.rudd70@icloud.com) or Adrian Marsh at [adrian.marsh@live.co.uk](mailto:adrian.marsh@live.co.uk)

## Appleby Rotary Club

Appleby Rotary Club is supporting Physionet, a UK based humanitarian organisation dedicated to helping some of the most marginalised people in the world by supplying children and adults with disability equipment considered surplus or redundant in the UK. Physionet supplied almost 8000 items of physiotherapy, paediatric equipment, wheelchairs, mobility items and some hospital hardware that would have normally ended in landfill.

If you have any surplus/redundant equipment please contact us and we will arrange collection.

Alastair Bell - Appleby Rotary Club on [atbell@btinternet.com](mailto:atbell@btinternet.com) or ☎07970597536 / 017683 51547

## Villages

### Asby

Wed. 1<sup>st</sup> 7:30pm The Hollies  
Asby Fellowship - John Bevan

Thurs 9<sup>th</sup> 12 noon The 3 Greyhounds  
Diners Club Main course/tea/coffee £7.50, dessert +£2.50. Please let the 3 Greyhounds know if you're coming

Wed. 15<sup>th</sup> 7:30pm The Hollies  
Asby Fellowship - Donald Marston

Wed. 29<sup>th</sup> 7:30pm The Hollies  
Asby Fellowship - Jane Morris

### Colby (village hall)

Sat. 11<sup>th</sup> 10:30 - noon Coffee Morning  
(and every 2<sup>nd</sup> Saturday of the month) £1 plus a raffle.

Fri. 24<sup>th</sup> 7:30pm Dominoes Evening

## Dufton Village Hall

### Regular weekly events

Mondays 10:45 - 12:30 Coffee club

Wednesdays 10 - 11:45 Yoga with Jo Chapman

### Special events

Friday 3<sup>rd</sup> - Eden Valley Touring Network music events- Bramble and Briar plus Alan Deen. £5.00  
Doors open 7pm for 7.30 start. Bar available.

Wednesday 8<sup>th</sup> - Open Circle 7.30-9.00pm

Friday 10<sup>th</sup> November at 7.30pm Christmas Bingo in aid of Dufton Church - in Dufton Village Hall. Excellent prizes. Bring your own refreshments

## Long Marton

Saturday 11<sup>th</sup> November 10am to 12noon: Coffee, chat & books, plus bacon butties. All are welcome

Local History Group: Wednesday 15<sup>th</sup> November 7.30pm  
Talk by Dave Carter 'Carlisle in the Great War' - What happened to civilians. £3 to include refreshments, details from Christine at [longmartonlocalhistorygroup@gmail.com](mailto:longmartonlocalhistorygroup@gmail.com)

Craft and chat - Thursday evenings from 7.30pm - details from Nicola 62301.

Sunday 26<sup>th</sup> November Christmas Market - some tables are still available, to reserve a table please contact Vicky on 01931 715810.

Don't forget to consider the hall when thinking about a party or family gathering, if you're setting up a new activity or want to put on a play, rates from £6 per hour. Helpers needed to help out with future events at the village hall. Any enquiries please contact [bookingslongmartonvi@gmail.com](mailto:bookingslongmartonvi@gmail.com)

## Maulds Meaburn

Goings on at the village hall

Sunday 5<sup>th</sup> Bonfire Night supper, hosted this year by MMVI

Monday 6<sup>th</sup> 10:30 to noon Coffee Morning

Saturday 11<sup>th</sup> 10:30 - 3:30 Craft Fair. Free Entry. There will be a variety of craft stalls, refreshments and a raffle. Come and start your Christmas shopping

Friday 17<sup>th</sup> 7pm onwards Gather Inn bar.

Saturday 25<sup>th</sup> 7pm We welcome Alan Cleaver to talk about 'Ancient Paths, Corpse Roads, Beggars' Trods and Postal Paths' with particular reference to Maulds Meaburn and further afield in Cumbria. Tickets are £5 and can be reserved by contacting Karen Asquith (as before). The bar will be open from 6.30pm and there will be refreshments after the talk

## Milburn

Village coffee mornings first Saturday of each month (this month 4<sup>th</sup>). Church coffee mornings third Saturday of each month (this month 18<sup>th</sup>), both 10:30 to noon.

## Ormside

Village hall coffee mornings are the 2<sup>nd</sup> and 4<sup>th</sup> Wednesdays (i.e. 8<sup>th</sup> & 22<sup>nd</sup>) from 10.30 till noon.

Country Dancing 2<sup>nd</sup> and 4<sup>th</sup> Mondays (i.e. 6<sup>th</sup> & 20<sup>th</sup>), 7:30 to 9pm.

Craft night is on the third Wednesday (13<sup>th</sup>) at 7.30 pm.

Saturday 18<sup>th</sup> Quiz Night Kick off 7:30pm, bar opens 7pm

Fancy a game of Ping Pong?! We have a brand new table tennis table at Ormside Village Hall. It's available to hire, at £6 per hour, including use of the hall for an hour, 4 bats and balls or BYO equipment. To book ring ☎07759011555

## Temple Sowerby

Information on clubs, events, sports and exercise classes held in the village can be found on the website which is <https://templesowerbyvillage.co.uk/>

Coffee Morning is 10am - noon on the 1<sup>st</sup> and 3<sup>rd</sup> Tuesdays of the month (7<sup>th</sup> and 21<sup>st</sup>) at the Victory Hall. All are welcome.

## Warcop - Parish Hall

Mondays	6:30 - 8	table tennis club
Wednesday 1 <sup>st</sup>	7:30 pm	Warcop & Sandford WI
Thursday 2 <sup>nd</sup>	11:30 - 1	Monthly Soup and Pud
Saturday 11 <sup>th</sup>	10 - 11:30	Coffee Morning
Friday 24 <sup>th</sup>	7:30pm	Christmas Fair
Free entry - Bar - Raffle		

Come along for a lovely evening - have a few drinks with nibbles and start getting ready for Christmas!

Lots of gifts, cards, Christmas decorations, glassware, make-up, jewellery, skincare, handbags, flowers, sweets, etc

**Thurs. 16<sup>th</sup> 7:30 Remote Cinema**

### Remote Cinema - The Fabelmans (12)

Directed by Stephen Spielberg and starring: Michelle Williams, Paul Dano, Gabriel LaBelle and David Lynch.

This is a semi-autobiographical story based on Spielberg's early years. Young Sammy Fabelman falls in love with movies after his parents take him to see 'The Greatest Show on Earth'. Armed with a camera, Sammy starts to make his own films at home, much to the delight of his supportive mother.



Doors open 7.15pm, Screening: 7.30pm, refreshments available during the interval

Adults: £4.50 if booked at least 24 hrs in advance, £5.00 on the door. Children under 16: £3.00

To book tickets in advance, please email [warcopcinema@outlook.com](mailto:warcopcinema@outlook.com)

## The Baker of Tebay

Members of a Cumbrian congregation are cheering on their deputy churchwarden as she competes in this year's Great British Bake Off.



Abbi Lawson, aged 27, is a member of St James' Tebay and was one of 12 contestants to feature in the first episode of the hit programme's new series, broadcast last night.

Viewers saw Abbi take on the challenge of Cake Week, with the aim to bake a perfect vertically layered cake. She drew on her foraging skills using wild blackcurrants and poppy seeds for the cake and foraged gorse petals for its decoration. Abbi explained why she put herself forward for the programme, adding: "I had success at my village show and that made me think 'Give it a shot. What's the worst that can happen?'"

The Rev Canon Brendan Giblin, vicar of St James', praised her cake making skills and says she is being encouraged by everyone at her church. He added: "We were all thrilled to hear that Abbi had been successful in applying for the programme. She's a star baker in her own right and has done so well to make it through to the show as thousands of people apply each year. "We'll be praying for Abbi over the coming weeks as she faces all the various challenges in the Bake Off tent!"

As part of a technical challenge on the show, Abbi and the other contestants were asked to bake a chocolate

fudge cake topped with fresh raspberries. And Abbi drew on her Cumbrian roots for the third challenge, designing a Herbert the Herdwick Sheep ginger sponge cake featuring a hazelnut praline crunch. Brendan added: "It was lovely to see Abbi celebrate her Cumbrian heritage with the Herdwick sheep cake design. In fact it looked too good to eat!"

(Not exactly a spoiler but she got knocked out in bread week on 10th October, although receiving high praise for her bread)

## Rev. Fran on Prayer

I wonder if you have ever asked yourself why we pray.

The Oxford English dictionary defines prayer as, 'a solemn request for help or expression of thanks addressed to God or another deity'. Prayer, of course, takes many forms, and in the Church of England there is a breadth of tradition surrounding prayer; from the monastic rhythms of the Church Fathers, to new expressions that include art, music and being in creation. When I was growing up I was encouraged to use the acronym ACTS so that my prayers included adoration, confession, thanksgiving and supplication. It's a pattern that we often use in our Sunday worship too.



But prayer is also about communication and I've heard it said that women pray so that they know they have been listened to! It's a funny adage but has truth at its heart because I think we all pray to be heard, especially when we are walking through difficult times.

When we began the Welcome Inn back in November last year, we also set up a prayer chain to sit alongside the candles that many of you light when you visit St Lawrence's. There is something very intimate and personal about naming the person that you are wanting prayer for, and every Tuesday when we meet together, and on a Sunday morning, we hold those people before God.

Since it began that list has grown, and grown, and grown . . . so much so that we've had to begin writing names into a book so that we can remember them. To date we have over 1,000 prayer requests for people you know who are very ill or to remember those you have lost.

We have a special service remembering all those we have lost November 5th. 15:00 in St Lawrence's Church - please come and join us.

## Destiny Africa Choir

**Rosie Liddell of Temple Sowerby writes:**

We are very excited to be hosting the Destiny Africa choir in the benefice in December of this year.

The choir come from Kampala Children's Centre, which has been set up to house and educate some of the many orphans in Uganda. The choir give an amazing energy-filled evening's entertainment of singing, drumming, dancing and telling their stories. They are doing a UK tour this autumn to raise funds for the children's centre. It is a great project, which Ralph and I



## Concerts

They will perform two concerts, one at Temple Sowerby, the other at Great Asby. The dates are Monday 11<sup>th</sup> December and Tuesday 12<sup>th</sup> December, but we are waiting to confirm which date will be at which venue, then will be putting out publicity and selling tickets. The tickets will be £5 for adults and £3 for children (with possibly a family ticket price).

## Help needed

We have a team already in place beginning to plan for the occasion. A few more helpers would be useful. Please contact me if you can help with any of the following:

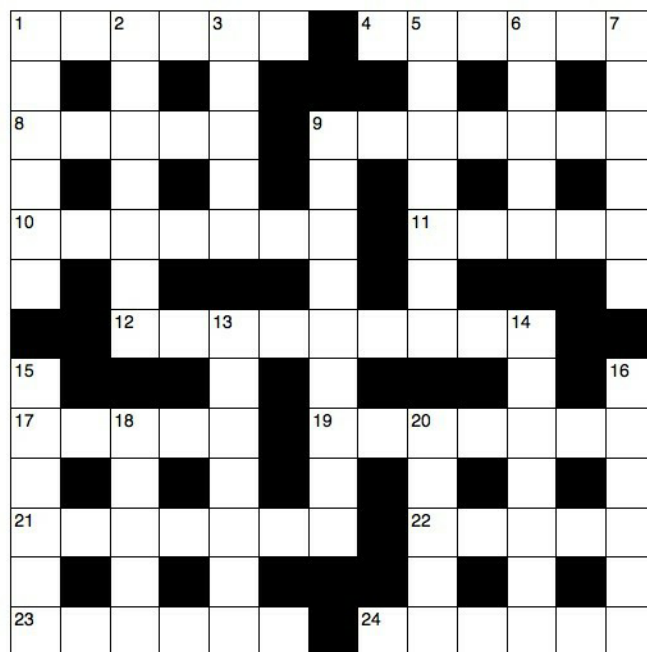
We are looking for a screen or screens to offer a small changing area for 2 people at each venue.

- We are looking for some mobile staging.
- Anyone with sound technology equipment or expertise would be helpful.
- Help with providing meals at either location. This will be a team effort to share the workload.
- We need a pool of cars and drivers. We have some people already but may be useful to have some backups. We will organise this fully once the schedule is finalised.

Please spread the word and see if we can fill both churches for the concerts. If you want to be kept updated so you can share with others in your area, let me know.

And finally, please pray for the choir, that God will really bless their time with us.

## Crossword - solution page 12

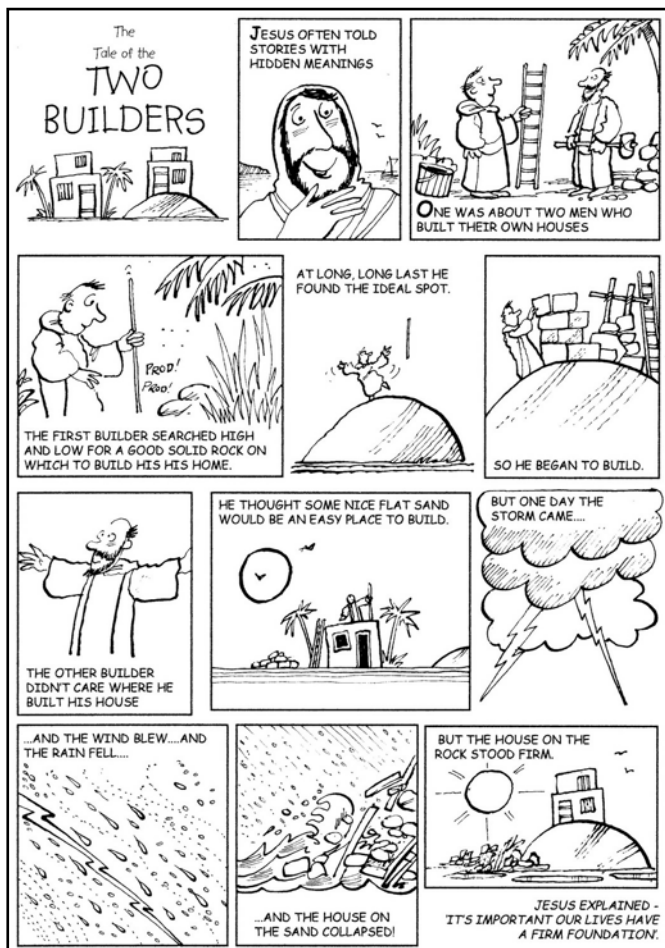


### Across

- 1 'The Lord Jesus... took bread, and when he had given - , he broke it' (1 Corinthians 11:24) (6)
- 4 'He has taken me to the banquet hall, and his - over me is love' (Song of Songs 2:4) (6)
- 8 Surrey town that hosts the National Christian Resources Exhibition (5)
- 9 Also known as Abednego (Daniel 1:7) (7)
- 10 Liken (Isaiah 40:18) (7)
- 11 A son of Etam, descendant of Judah (1 Chronicles 4:3) (5)
- 12 A part of the temple where the blood of a young bull was to be smeared (Ezekiel 45:19) (9)
- 17 'They make many promises, take false - and make agreements' (Hosea 10:4) (5)
- 19 Roman province to which Paul returned after evangelizing it on his first missionary journey (Acts 16:6) (7)
- 21 Material used to make baby Moses' basket (Exodus 2:3) (7)
- 22 'And feeble as - , in thee do we trust, nor find thee to fail' (5)
- 23 'The watchman opens the gate for him, and the sheep - to his voice' (John 10:3) (6)
- 24 Stalk carrying the sponge of wine vinegar given to Christ on the cross (John 19:29) (6)

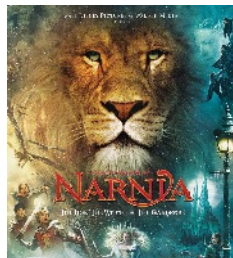
### Down

- 1 Elijah dug one round the altar he built on Mount Carmel and filled it with water (1 Kings 18:32) (6)
- 2 'I am not - of the gospel, because it is the power of God for the salvation of everyone who believes' (Romans 1:16) (7)
- 3 Buddhist term relating to belief in reincarnation (5)
- 5 Damascus disciple who, at God's command, restored the sight of the blinded Saul of Tarsus (Acts 9:12) (7)
- 6 and 16 Horses: their sound (Jeremiah 50:11) (5) and their gait (Joel 2:4) (6)
- 7 A three (anag.) (6)
- 9 Athenian council addressed memorably by Paul (Acts 17:22) (9)
- 13 Abide by (Galatians 3:5) (7)
- 14 Persian princes (Daniel 3:2) (7)
- 15 Force (Galatians 6:12) (6)
- 16 See 6 Down (6)
- 18 Paste (anag.) (5)
- 20 How the cedars of Lebanon are described (Isaiah 2:13) (5)



## C S Lewis - remembering the creator of the Chronicles of Narnia

It was 60 years ago this month, on 22nd November, that the famous writer C S Lewis died. This Irish-born British academic, novelist and literary critic is best known for his novels on The Chronicles of Narnia, and his books on Christian apologetics.



Clive Staples Lewis was born in Belfast November 1898. He arrived in Oxford in 1917 as a student and stayed on as a fellow and tutor at Magdalen College for 29 years. In 1954 he moved to Cambridge University's Magdalene College, until his death in 1963.

C S Lewis's books include The Chronicles of Narnia, The Screwtape Letters, the Space Trilogy, Mere Christianity, Miracles, and the Problem of Pain.

Lewis was a close friend of JRR Tolkien, who also taught at Oxford. They were both active in the informal Oxford literary group known as The Inklings. Lewis had been baptised in the Church of Ireland, but then had abandoned his faith as a young man. He was converted to Christianity and became an Anglican at the age of 32, influenced by Tolkien and others.

Lewis' faith had a profound effect on his work and writings, and his wartime radio broadcasts on Christianity made him famous. In all, Lewis wrote more than 30 books, which have sold millions of copies. His Chronicles of Narnia was televised and filmed, and his Christian apologetical writings are still widely used today.

In 1956 Lewis married American writer, Joy Davidman, who died of cancer four years later, aged only 45. Lewis died on 22nd November 1963 from kidney failure. In 2013, on the 50th anniversary of his death, Lewis was honoured with a memorial in Poets' Corner, in Westminster Abbey.



### Renew Wellbeing Café

Appleby Cricket Club  
Every Friday 9:30 – 11:30 am

Where it's ok to not be ok  
An intentionally calm, shared space  
Free of charge – All Welcome, everyone values  
Open to people of all faiths and none  
Each session starts and ends with a 5 – 10 minute meditation and prayer, which we find helps wellbeing.  
You're welcome to join in or come after the prayer time and leave just before. We look forward to spending time with you.  
If you fancy it, bring a craft or hobby to do! But this isn't essential, sitting, chatting and listening is just as good.  
Our main priority is to look after our wellbeing, so do what is most comfortable for you. Come and go as you please.

Contact Kristy Pattimore

[krist@pattimore.com](mailto:krist@pattimore.com) ☎07480.935119

### Qualified Foot Health Professional

Aggie Koza MCFHP MAFHP  
21, Belle Vue Road,  
Appleby  
CA16 6TY  
Home visits by arrangement – day, evening and weekends  
017683.98457  
07910 028



WILLS, TAX & PROBATE SOLICITOR

LYNN EMERY

One of the few true specialists. Large city firm experience without the high prices. Has saved millions of £'s of tax  
01697.478303 / 07901.229218

### Appleby Travel

Looking after your travel needs and dreams since 1987

Specialists in cruising and tailor-made travel

16, Boroughgate  
Appleby-in-Westmorland  
Cumbria CA16 6XB

Tel. 017683.52220

ABTA No. 89495

Email

[holidays@applebytravel.co.uk](mailto:holidays@applebytravel.co.uk)

## Community Engagement Meeting

### Edenside – Next steps

Where: Appleby Hub

Time: 1100 & 1200

(11am Update + opportunity for Q&A  
To be repeated at 12pm)

When: Tuesday 14 November

Informal – talk to us  
Refreshments

**Oaklea**  
Supporting stronger communities

We give free, up-to-date advice to everyone in Eden

Coronavirus has made life hard for many people. Citizens Advice Carlisle & Eden is here to help.

If you need help with benefits, work, debt and money, housing, or more, please get in touch or look at useful information available at [www.citizensadvice.org.uk](http://www.citizensadvice.org.uk).

For Debt/Money advice or Foodbank referrals: 03300 563037

For help claiming Universal Credit: 0800 1448 444

For all other enquiries: 0800 278 7844

Email Advice:  
Via Contact Us form on website;  
[www.ca-ce.org.uk](http://www.ca-ce.org.uk)

Webchat Advice  
[www.citizensadvice.org.uk](http://www.citizensadvice.org.uk)

Check out our social media page  
Twitter & Facebook:  
@CarlisleEdenCA



# THE LAWN CUTTERS

We cut your lawn.  
You spread the cost over 12 months.

Cuts occur between March-October, once or twice per month (depending on your preference).

Residential. Commercial.

[www.thelawncutters.co.uk](http://www.thelawncutters.co.uk)  
[contact@thelawncutters.co.uk](mailto:contact@thelawncutters.co.uk)  
01768254554

## **ADVICE, ADMIN. & ADVOCACY**

Do you get frustrated that everything is now on the internet? Or you can be stuck on the phone for hours?

**Then Vincent Egan can help you**

From Passports, Probate & Pensions, Admin, Guidance & all types of paperwork.

Face to face, tailored support & all the 'Techy' stuff done on your behalf.

**Contact Vincent**  
**Penrith: ☎01768 866866**  
**or 07860 289516**



**Milburn Primary School**

Bespoke learning for children aged 3-11 in a unique rural environment

**Place available to start immediately**

Your child can start immediately when they are 3 or above - our intakes are January, April & September. Funded 15 or 30 hour applications are welcome and there is a facility to top up hours to full time.

If you would like to discuss what we can offer or would like to visit the school, please contact us.

**Milburn Primary School**  
Milburn, Penrith, Cumbria, CA10 1TN  
017683 61514  
[admin@milburn.cumbria.sch.uk](mailto:admin@milburn.cumbria.sch.uk)  
[www.milburn.cumbria.sch.uk](http://www.milburn.cumbria.sch.uk)

**Ofsted**  
Good Provider



The Conservation and Restoration of traditionally built buildings throughout Cumbria.

- Lime POINTING
- Lime PLASTERING
- Lime RENDER
- Lime MORTAR
- LIMECRETE FLOORS

[lakedistrictlime.com/](http://lakedistrictlime.com/) 07554019469



**Mike Addison FBDO CL**  
**OPTICIAN**

**Mike Addison Optician**  
**The Shire Hall, The Sands,**  
**Appleby-in-Westmorland CA16 6XN**

**"Providing eye care for all the family"**

Over 60's and under 16's receive **FREE** eye examinations.

Private & NHS patients welcome.

New OCT technology for more detailed eye examinations

Tel: Appleby: 017683.53199  
Kirkby Stephen: 017683.71555

Email - [info@mikeaddisonoptician.com](mailto:info@mikeaddisonoptician.com)

Full disabled access and free on-site parking (please phone for more info.)



◆ Physiotherapy ◆ Massage therapy ◆ Sports injury

**Registered physiotherapist in Appleby**

[www.restorerecover.co.uk](http://www.restorerecover.co.uk)

Call: 07793551976



# RAZZAMATAZ THEATRE SCHOOLS



**You're invited to a  
FREE TASTER SESSION at  
Razzamataz Theatre Schools.**

From babies to 18 year olds!

Tuesday's - Kendal  
Wednesday's - Penrith  
Thursday's - Appleby

**Booking Essential!**

To book or for more  
information call/text or email

Asha on:

07539144225

penrith@razzamataz.co.uk



**PENRITH  
LINKING LIVES**



- Are you lonely, living alone with no one to chat to?
- Do you know someone who is socially isolated?
- Do you know of someone whose family has moved away?
- Do you know of someone who just needs a friend?
- Do you want to volunteer or find out more?

#### WHO ARE WE?

- Linking Lives brings people together to support socially isolated people through home visits, telephone calls and engagement in social events and activities in the community.
- We make weekly visits or phone calls to enable volunteers to make a significant difference to the lives of people.
- We receive referrals from local organisations, friends and family members. Volunteers are fully vetted, interviewed, trained and linked up with someone matching their interests and personality.

For more information, to volunteer or to refer someone please email  
penrith@linkinglives.uk call us on 0795 173 8540 or visit our website [www.linkinglives.uk/](http://www.linkinglives.uk/)



**STOBARS HALL**

**Residential and Dementia Care for the Elderly**

*We offer excellence in care providing safety and well being for  
our residents and peace of mind for their family & friends*

Day Care and Respite stays available

No appointment necessary, call in for a chat anytime!

For further details please call **017683 71291**

Email: [stobarshall@thefranklyngroup.com](mailto:stobarshall@thefranklyngroup.com)

Website: [www.thefranklyngroup.com/stobars](http://www.thefranklyngroup.com/stobars)



**FUEL & MORE FOR YOUR HOME**

	BULK BAGS	BARROW BAGS	NETS
KILN DRIED	£105	£65	
HARD WOOD	£ 95	£60	
SOFT WOOD	£ 75	£50	
HW NETS			£8
SW NETS			£6
KINDLING			£5

**OVOIDS 50KG & 25KG BAGS  
KINDLING, FIRE LIGHTERS, FLAMERS**

WE ARE YOUR LOCAL **FLO GAS** STOCKIST  
\*\* WE ALSO HAVE BUILDING SUPPLIES – SAND,  
CEMENT, AGGREGATES, BLOCKS, LINTELS, TOOLS  
AND MORE \*\*

WOODSURE READY TO BURN ACCREDITED

PLEASE RING 017683 72333

[wpssupplies@btconnect.com](mailto:wpssupplies@btconnect.com)

Unit 2 Station Yard, Kirkby Stephen CA17 4LA

## GLYN JONES & SON FUNERAL DIRECTOR

— ESTABLISHED 1979 —

**Offering you support, care  
and guidance at a time  
when you need it most.**

**A 24-hour professional and  
caring service covering  
Appleby, Kirkby Stephen  
and surrounding areas**

**Hugh and Lorraine Jones  
Kevin Robinson**

**12 Battlebarrow,  
Appleby-in-Westmorland  
Telephone : 017683 51569**



### D WAPPETT ELECTRICAL CONTRACTOR LTD

Domestic

Part P Approved NAPIT  
Contact GEORGE WAPPETT  
Tel. 017683-52012  
Mobile: 07815 703 404



Chimney and domestic oven cleaning services.  
[www.LadyMuckEdenValley.co.uk](http://www.LadyMuckEdenValley.co.uk)  
For prices and booking please contact Tanya on  
07444 240337 / 01768898752  
email: [LadyMuckEdenValley@gmail.com](mailto:LadyMuckEdenValley@gmail.com)

St Lawrence's Church  
Appleby



## An Audio Visual Evening

(Digital Slideshows of varying subjects with carefully chosen music)

by two

Award Winning Photographers

Les Ayres

&

John Tillotson

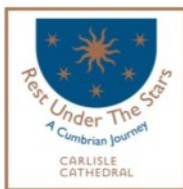
(Both with international distinctions)

Supper Room, Appleby Public Hall

Saturday, 18<sup>th</sup> November at 7pm

Admission £5 at the door  
including interval refreshments.

All proceeds to St. Lawrence's Church.



Rest Under The Stars is a free, interactive art installation which invites you to rest from the busyness of our lives under an awning of beautiful shapes and colours, created by Prism Arts and inspired by their visits to Carlisle Cathedral. The chairs and soundscape have also been designed and created by Prism Arts.

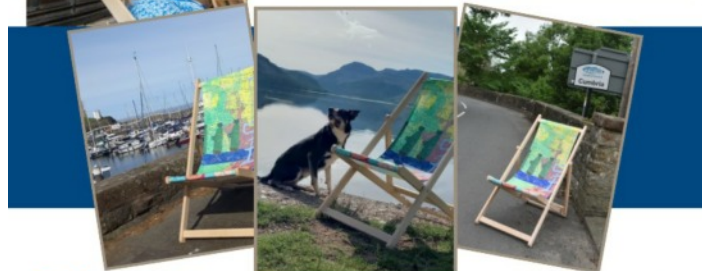


**Venue:** St Lawrence's, Appleby

**Date:** From 22nd November

**Time:** Open with the Church

**Contact:** [reverend@heartofeden.org.uk](mailto:reverend@heartofeden.org.uk)



## Wellbeing Wednesdays

A quiet space to take a break,  
meet with friends  
and share your interests

Pop along any time

Kirkby Thore Memorial Hall  
Every Wednesday between 2.30 and 4.30pm

Free tea, coffee and cake

## THE WELCOME INN!

We welcome you to join us  
at St Lawrence's Church, Appleby

For coffee, companionship and connection  
every Tuesday afternoon, from 1.00 to 3.00pm.



For further information, or prayer requests, you can email us at [welcometoinn@stlawrences.org.uk](mailto:welcometoinn@stlawrences.org.uk)

## Looking for Spiritual Food?

Live at Appleby Hub  
Second Thursday of each  
month 7.30 – 9.30pm

THE  
FILLING  
STATION

## Appleby Guide Hut

### For Hire

£12 per hour



**Suitable for:** one off events or regular meetings e.g. children's birthday parties, workshops, day and evening courses.

**Facilities:** Clean, bright, warm hall with toilets, fully equipped kitchen, stage, disabled access and toilet.

**Contact:** Pam Sharples - [Pam.sharples@outlook.com](mailto:Pam.sharples@outlook.com) 0756234560  
or Kathryn Nunn [kath1nunn@gmail.com](mailto:kath1nunn@gmail.com) 07717841723

All hire fees go towards supporting Appleby Rainbows, Brownies and Guides

## ROYAL AIR CADETS AIRFORCE the next generation

### ARE YOU LOOKING FOR A NEW CHALLENGE?

Are you up for fun, adventure, incredible experiences,  
obtaining new skills and making new friends and  
between 12 (in year 8) and 17yrs old



Squadron Headquarters  
Appleby Grammar School  
Battlebarrow  
Appleby-in-Westmorland  
CA16 6XU



For further information contact: [cc.2192@aircadets.org](mailto:cc.2192@aircadets.org)

2192 Appleby Grammar School Sqn ATC

Come and see what 2192 Appleby Air Cadet  
Squadron has to offer you

... it isn't just marching!

## Affected by Cancer?

Appleby & District Cancer  
Support Group invite you to  
**come for Coffee** and a  
Friendly Chat

We meet every  
1<sup>st</sup> & 3<sup>rd</sup> Monday  
in the month  
(excluding Bank  
Holidays) from  
10am to 12 noon  
in The Guide Hut, Holme Street,  
Appleby



For further information phone:

Rosie on 017683 52263 or

Jackie on 017683 52277

# Church Services for November 2023

## Church of England

### St. Lawrence, Appleby

Fri.	3 <sup>rd</sup>	10:00	Holy Communion
Sun.	5 <sup>th</sup>	08:00	Holy Communion
		10:45	Lay led MP
Fri.	10 <sup>th</sup>	10:00	Holy Communion
Sun.	12 <sup>th</sup>	10:45	Remembrance
Fri.	17 <sup>th</sup>	10:00	Holy Communion
Sun.	19 <sup>th</sup>	10:45	Holy Communion
Fri.	24 <sup>th</sup>	10:00	Holy Communion
Sun.	26 <sup>th</sup>	10:45	Holy Communion

### St. Peter, Asby

Sun.	5 <sup>th</sup>	15:00	Holy Communion
Sun.	12 <sup>th</sup>	10:45	Remembrance (at Lychgate followed by united at Baptists)
Sun.	19 <sup>th</sup>	15:00	Evening Prayer
Sun.	26 <sup>th</sup>	11:00	Morning Prayer

### Boroughgate, St. Anne

Thu.	2 <sup>nd</sup>	19:00	Taizé
Mon.	6 <sup>th</sup>	19:00	Compline
Tue.	7 <sup>th</sup>	09:15	Holy Communion
Tue.	14 <sup>th</sup>	09:15	Morning Prayer
Mon.	20 <sup>th</sup>	19:00	Compline
Tue.	21 <sup>st</sup>	09:15	Morning Prayer
Tue.	28 <sup>th</sup>	09:15	Morning Prayer

### Dufton St. Cuthbert

Sun.	12 <sup>th</sup>	15:00	'Remembering' Service (united with Dufton & Knock Methodists)
Sun.	26 <sup>th</sup>	10:30	Holy Communion

### Kirkby Thore, St. Michael

Sun.	5 <sup>th</sup>	10:00	Breakfast church
Sun.	12 <sup>th</sup>	10:30	Morning Prayer
Sun.	19 <sup>th</sup>	10:00	Breakfast church
Sun.	26 <sup>th</sup>	10:30	Holy Communion

### Long Marton SS. Margaret and James

Services suspended meanwhile

### Milburn, St. Cuthbert

Sun.	5 <sup>th</sup>	10:30	Holy Communion
Sun.	12 <sup>th</sup>	10:30	Holy Communion
Sun.	19 <sup>th</sup>	10:30	Holy Communion
Sun.	26 <sup>th</sup>	15:00	Advent Carols

### Murton, St. John

Sun.	12 <sup>th</sup>	10:30	Remembrance
Sun.	26 <sup>th</sup>	15:00	Evening Prayer

### Musgrave, St. Theobald

Sun.	26 <sup>th</sup>	10:00	Holy Communion
------	------------------	-------	----------------

### Newbiggin, St. Edmund

Sun.	5 <sup>th</sup>	10:30	Holy Communion
Sun.	12 <sup>th</sup>	10:45	Remembrance
Sun.	26 <sup>th</sup>	16:00	BCP Evening Prayer

### Ormside, St. James

Sun.	5 <sup>th</sup>	10:00	Matins
Sun.	12 <sup>th</sup>	10:00	Holy Communion
Sun.	19 <sup>th</sup>	10:00	DIY
Sun.	26 <sup>th</sup>	10:00	Holy Communion

### Temple Sowerby, St. James

Sun.	19 <sup>th</sup>	10:30	Holy Communion
------	------------------	-------	----------------

### Warcop, St. Columba

Sun.	5 <sup>th</sup>	10:30	Holy Communion
Sun.	12 <sup>th</sup>	10:55	Joint Remembrance
Sun.	19 <sup>th</sup>	10:30	Morning Praise

## Methodists

**Connexion Service** 18:30 on 12<sup>th</sup> at Kirkby Stephen  
Rev. Andrew Sterling

### Sands, Appleby

Sun.	5 <sup>th</sup>	10:30	Revs. J & L Riley
Sun.	12 <sup>th</sup>	10:30	Rev. Andrew Sterling
Sun.	19 <sup>th</sup>	10:30	Revs. R & G Crippen
Sun.	26 <sup>th</sup>	10:30	Rev. Andrew Sterling

### Dufton with Knock

Sun.	5 <sup>th</sup>	10:45	Local Arrangement
Sun.	12 <sup>th</sup>	15:00	United Service at Parish Church
Sun.	19 <sup>th</sup>	10:45	Mr. Allen Burton
Sun.	26 <sup>th</sup>	10:45	Local Arrangement

### Warcop

Sun.	5 <sup>th</sup>	10:30	Mrs. Jacky Ousby
Sun.	12 <sup>th</sup>	10:55	United Service at war memorial
Sun.	19 <sup>th</sup>	10:30	Mr. Richard McGregor
Sun.	26 <sup>th</sup>	15:00	Rev. Andrew Sterling

## Roman Catholic Church of Our Lady of Appleby

Masses on Sundays at 4pm, Tuesdays at noon,  
Confession Sundays at 3:30pm

